



ADDENDUM NO. 05 (Structural)

Date of Issuance: April 23, 2026

Project: **Replacement Elementary School on Mustang Road**
Alvin Independent School District

Issued by: Arcadis Inc.
P.O. Box 891209
Houston, Texas 77289
281-286-6605

Texas Arcadis Inc.
Project No.: 202502

Prepared for: Prospective Proposers

PART A: NOTICE TO PROPOSERS:

1. Receipt of this Addendum shall be acknowledged on the Proposal Form. Failure to do so may subject Proposers to disqualification. Each proposer shall make necessary adjustments and submit his proposal with full knowledge of all modifications, clarification, and supplemental data included therein.
2. This Addendum forms part of the Contract Documents and shall be incorporated integrally therewith. Where provisions of the following supplemental data differ from those of previously issued documents, this Addendum shall govern.
3. The following Contract Documents have been issued to date delineating the Work (Project).

Contract Documents	04/06/2026
Addendum No. 01 (Arch)	04/13/2026
Addendum No. 02 (Pre-Proposal)	04/17/2026
Addendum No. 03 (Arch + Interior)	04/20/2026
Addendum No. 04 (MEPT)	04/22/2026

4. This Addendum consists of: Two (2) 8-1/2x11 written pages and one (1) full-size New or Re-issued Sheets / Drawings as described in PARTS E and F below; as prepared by CJG Engineers. Total pages: Three (3).

PART B: GENERAL PROJECT CLARIFICATIONS

5. None

PART C: CHANGES TO PRIOR ADDENDUM

6. None

PART D: CHANGES TO THE PROJECT MANUAL

7. None

PART E: CHANGES TO THE DRAWINGS

8. Sheet S4.02 – Foundation Details

a. Detail 1

- i. Change grout at column baseplate to concrete to create a brick ledge
- ii. Call out #3 dowels @ 9" oc max each way to be placed in the new concrete ledge around the column baseplate

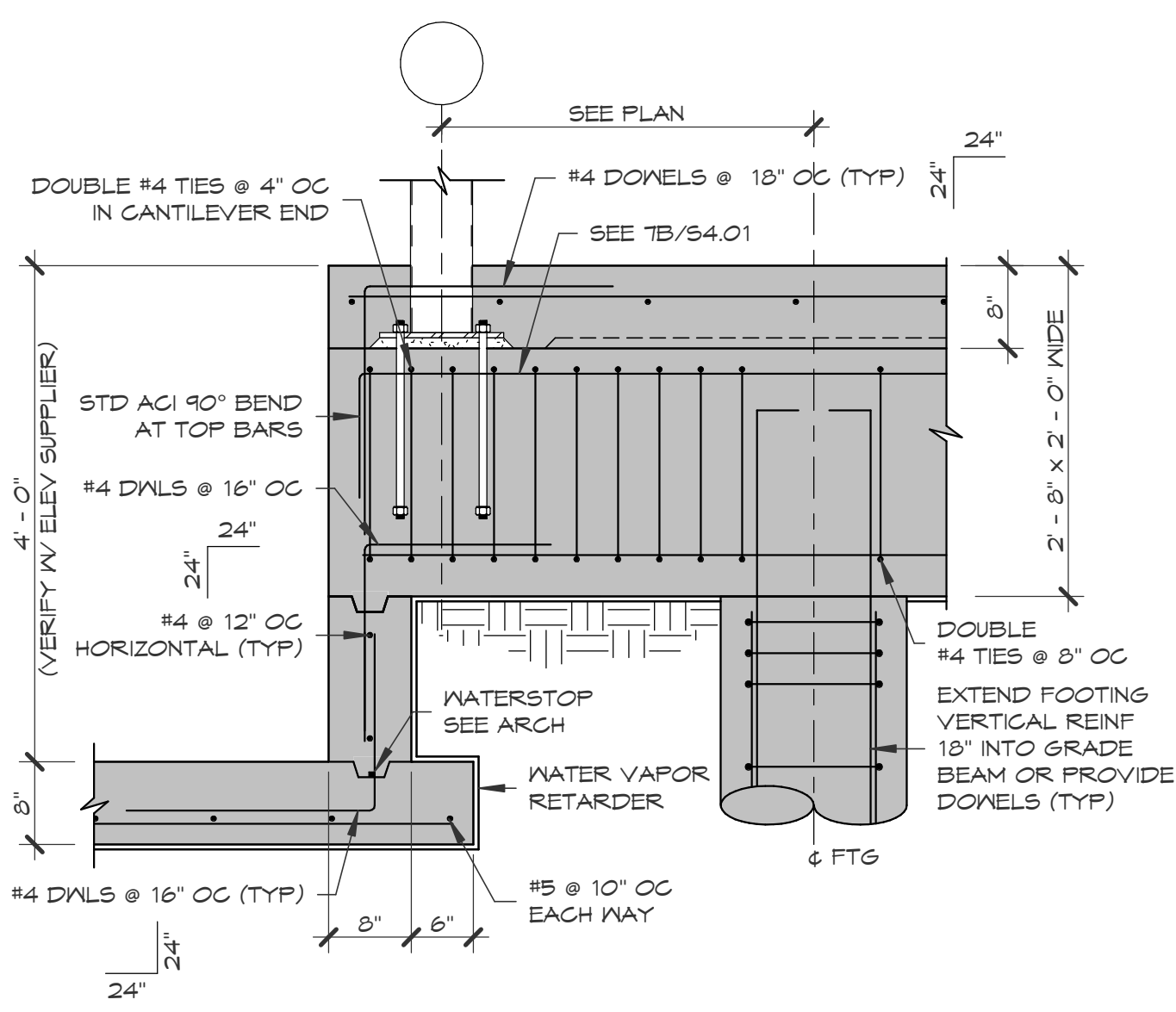
PART F: RE-ISSUED SHEETS

9. Sheet S4.02 - Foundation Details

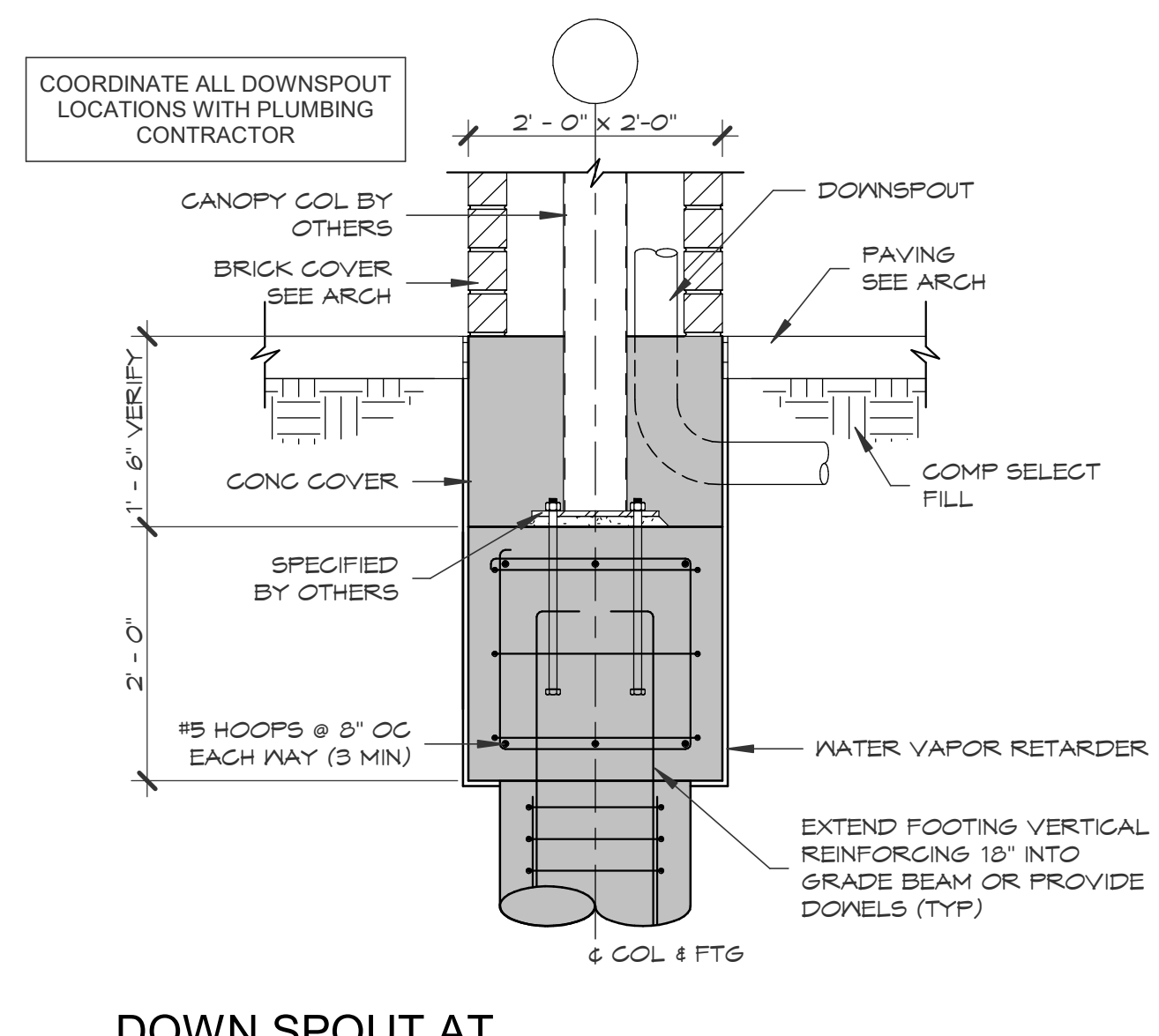
PART G: NEW ISSUED SHEETS

10. None

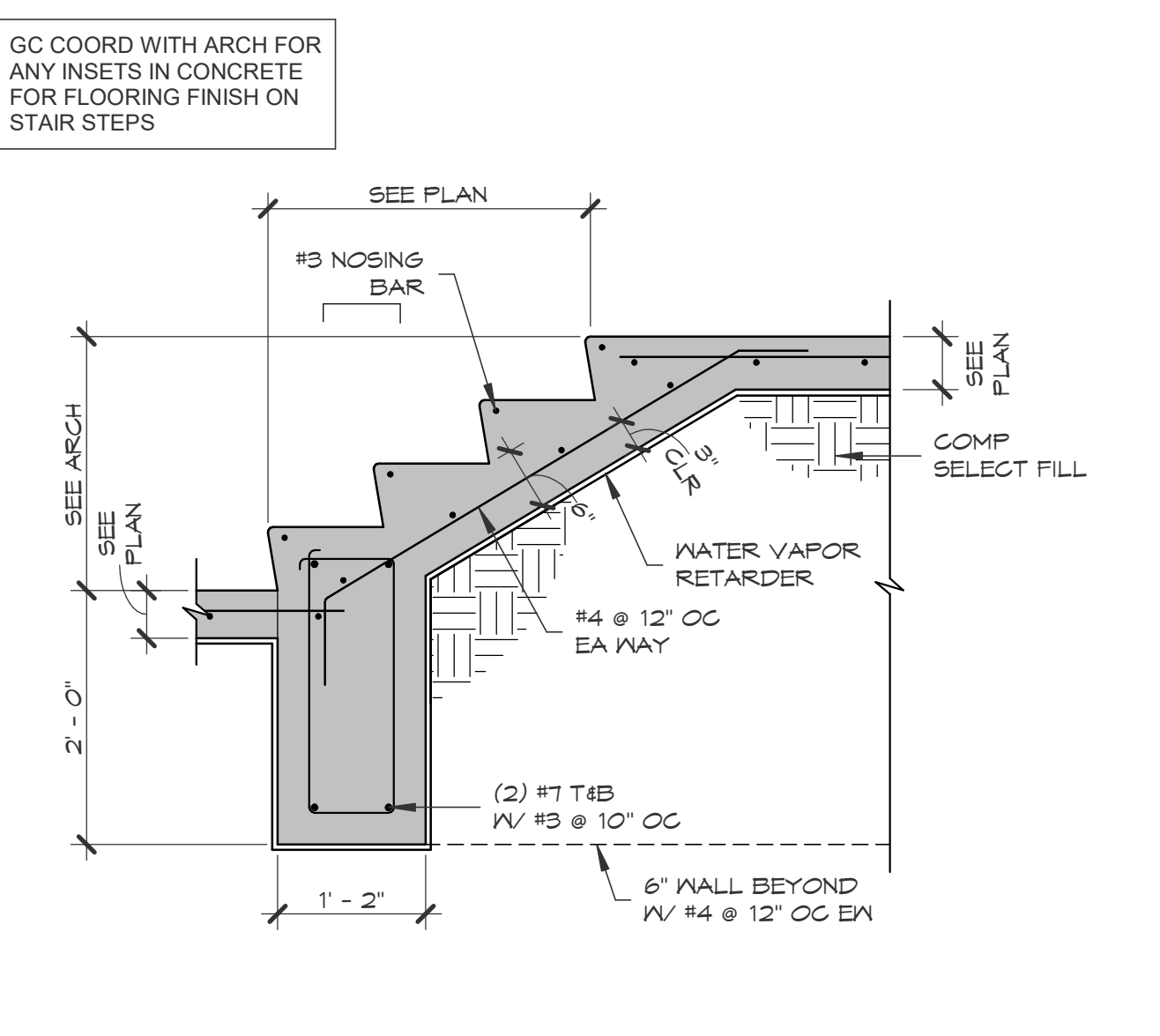
END OF ADDENDUM NO. 05



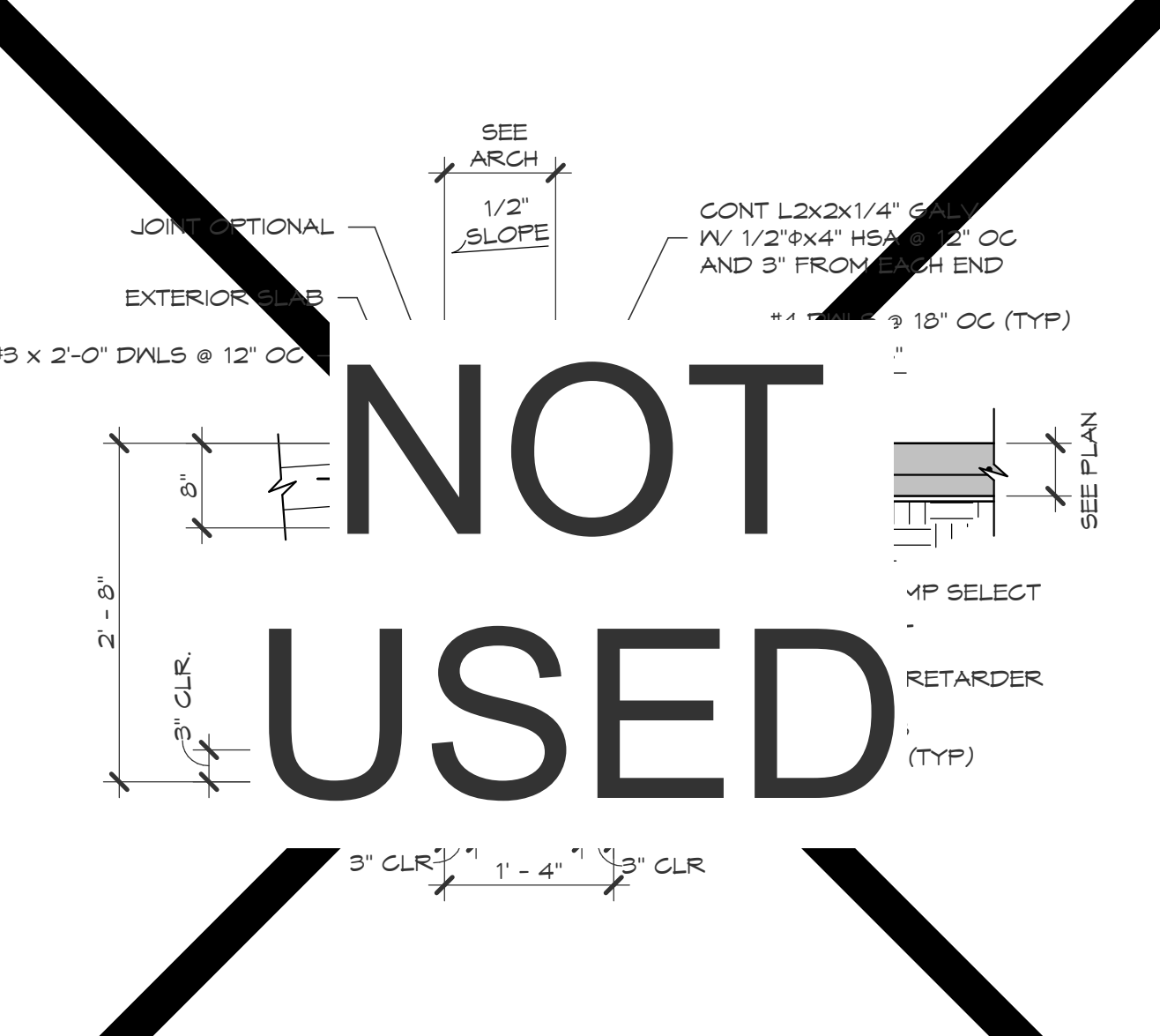
20 ELEVATOR PIT AT COLUMN
SCALE: 3/4" = 1'-0"



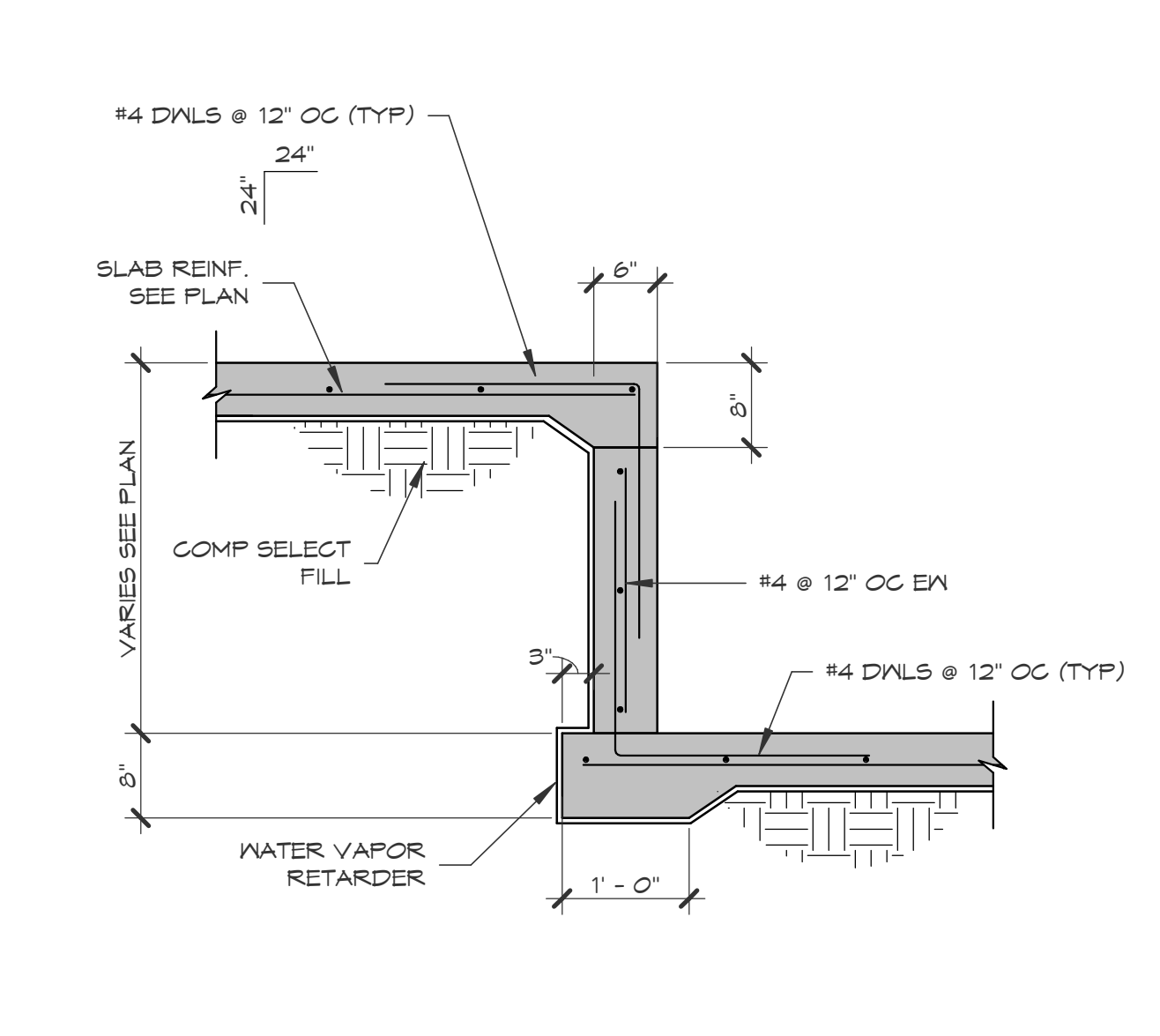
16 DOWN SPOUT AT ISOLATED EXTERIOR COLUMN
SCALE: 3/4" = 1'-0"



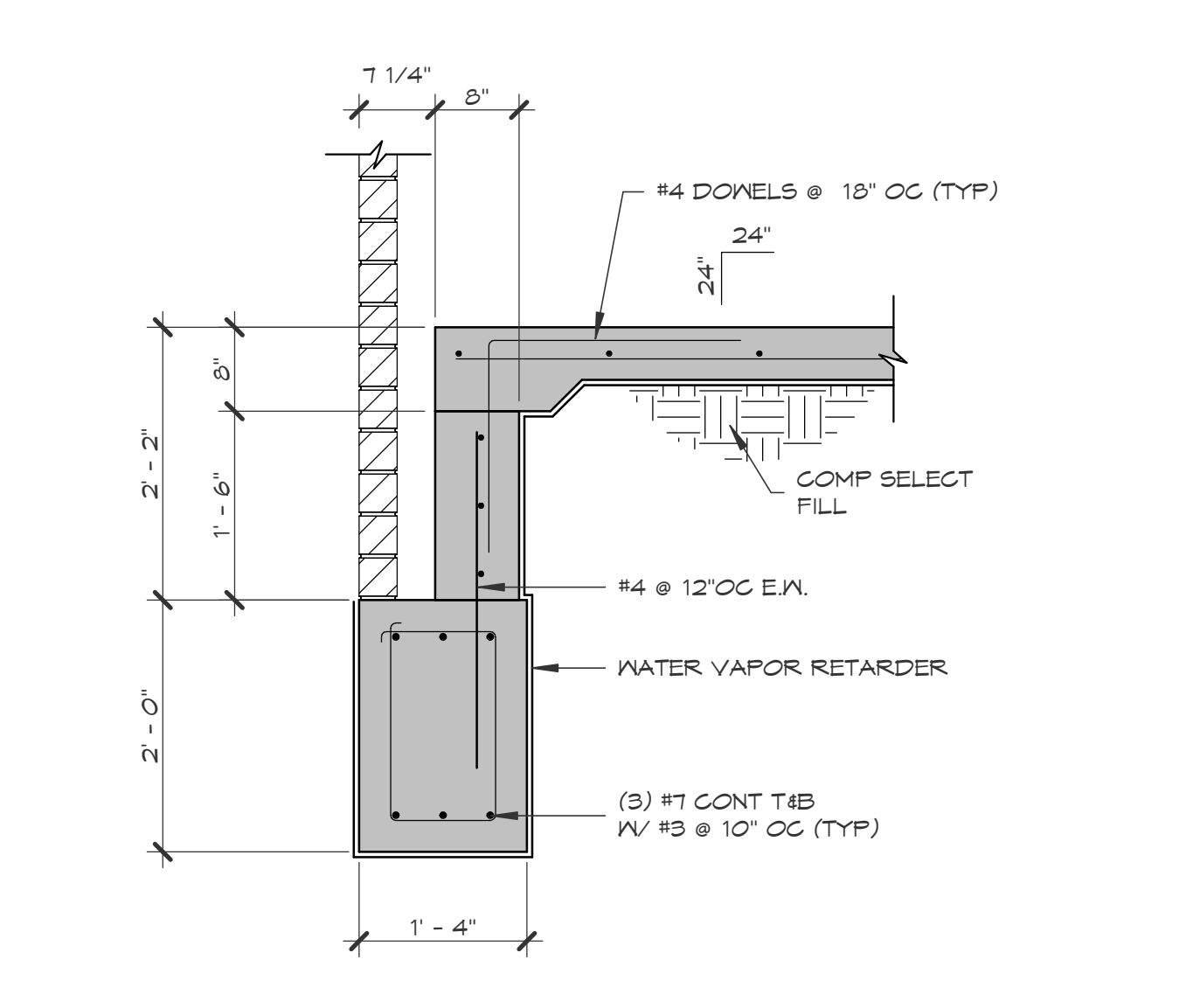
12 TYPICAL MONOLITHIC STAIR DETAIL
SCALE: 3/4" = 1'-0"



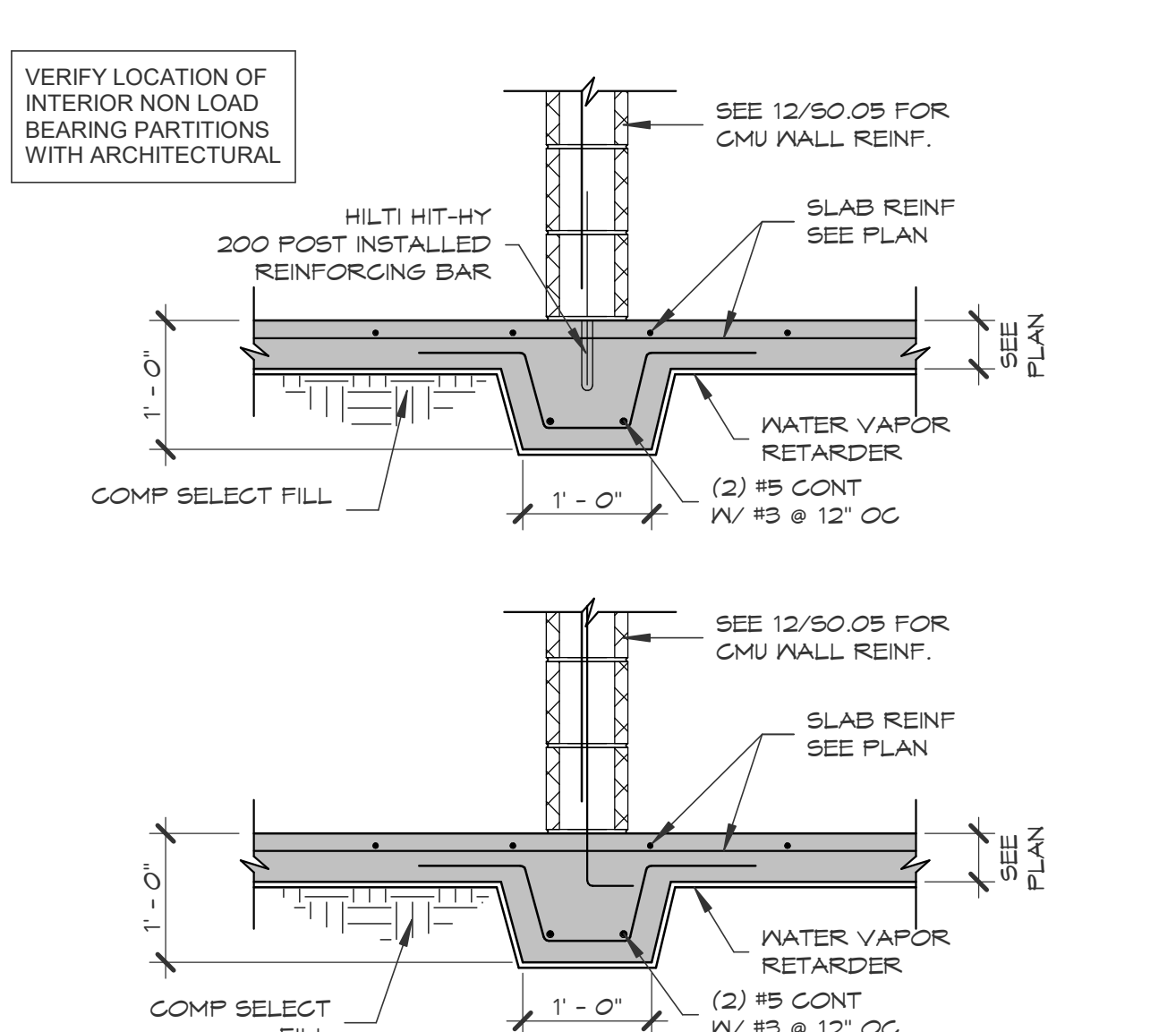
8 GRADE BEAM AT OVERHEAD DOOR
SCALE: 3/4" = 1'-0"



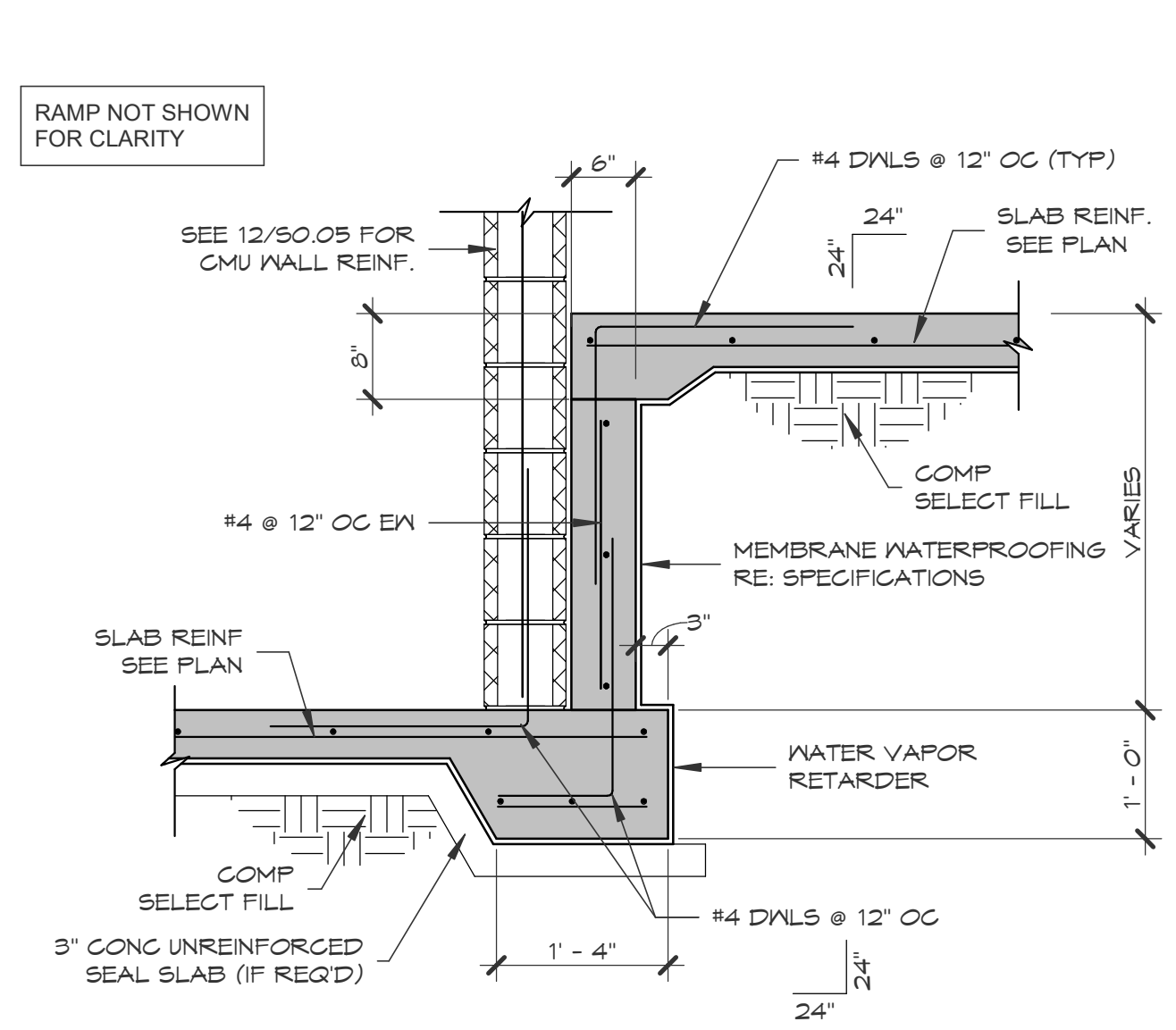
4 STEP DOWN SLAB DETAIL
SCALE: 3/4" = 1'-0"



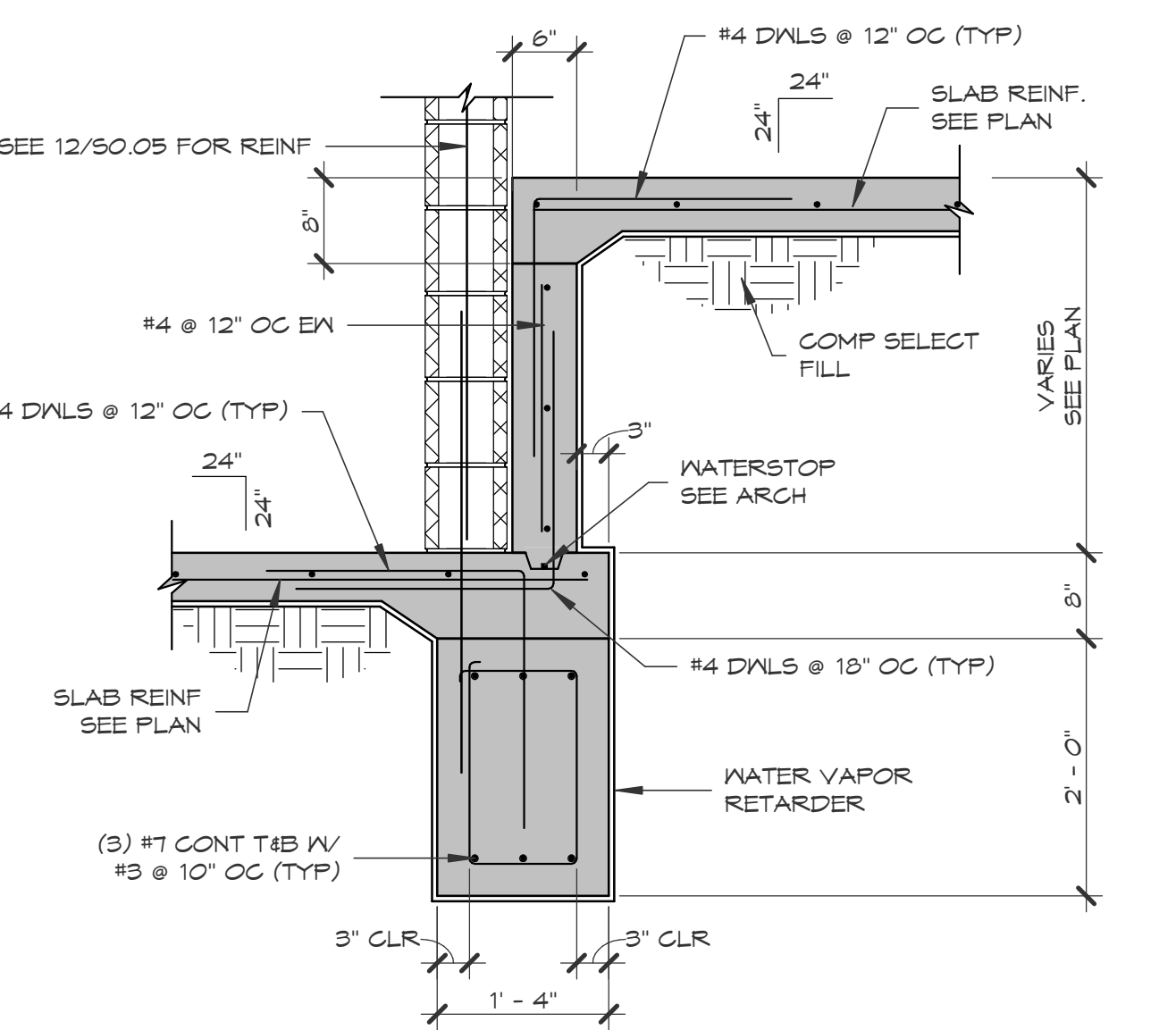
19 STEP DOWN SLAB DETAIL AT BRICK LEDGE
SCALE: 3/4" = 1'-0"



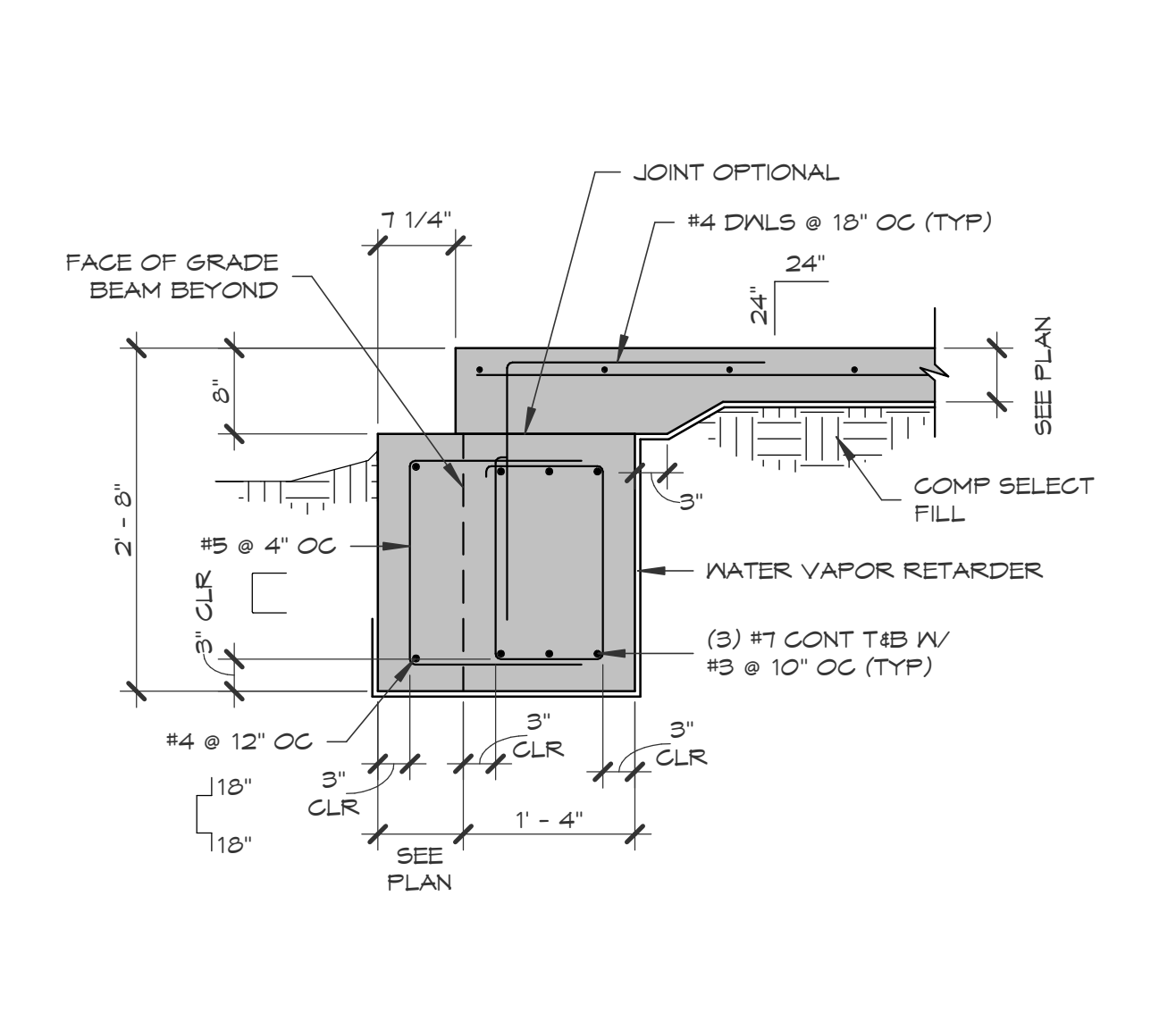
15 SHOVEL BEAM AT CMU WALL DETAIL
SCALE: 3/4" = 1'-0"



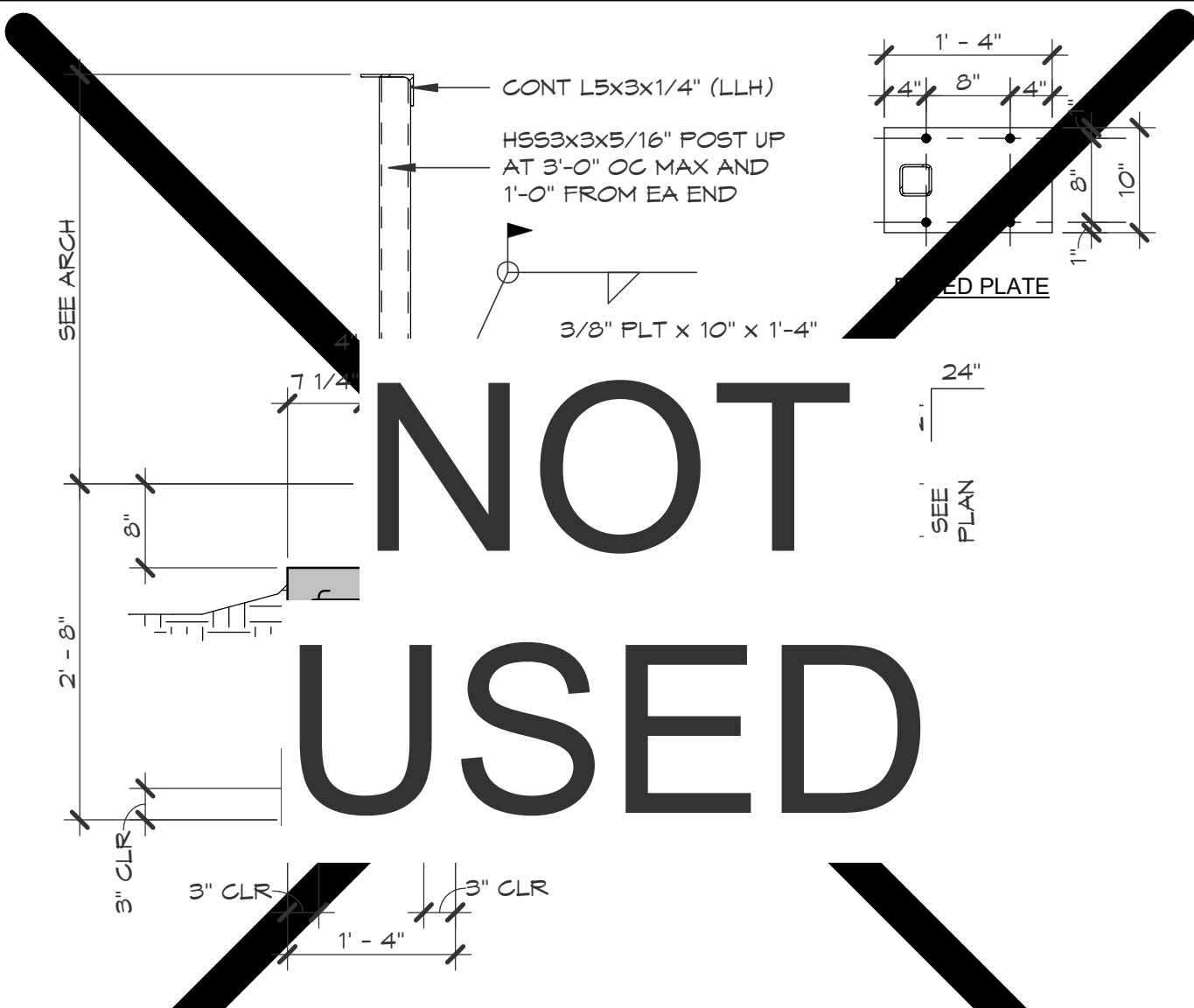
11 STAGE EDGE AT RAMP DETAIL
SCALE: 3/4" = 1'-0"



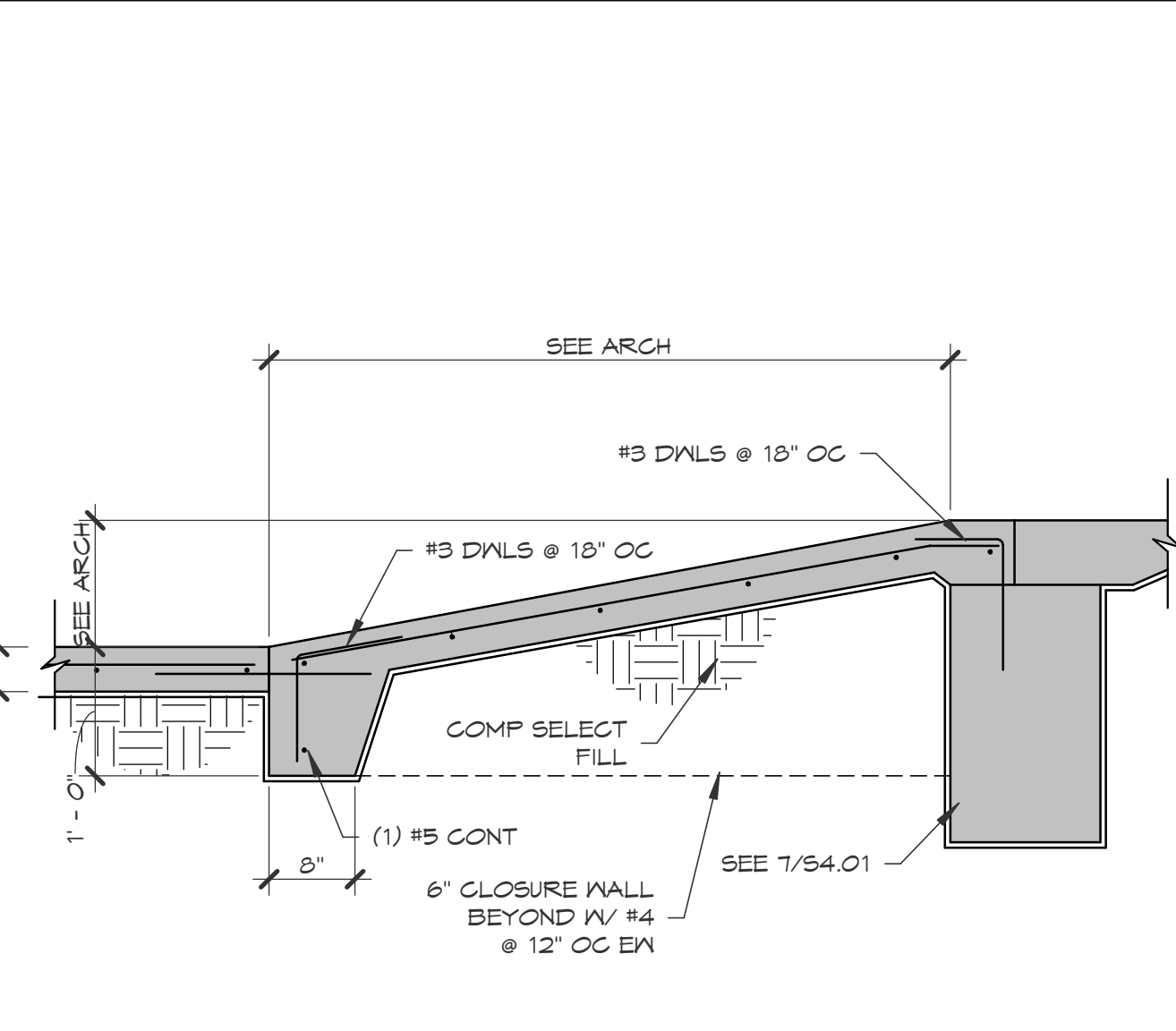
7 STEP DOWN SLAB DETAIL
SCALE: 3/4" = 1'-0"



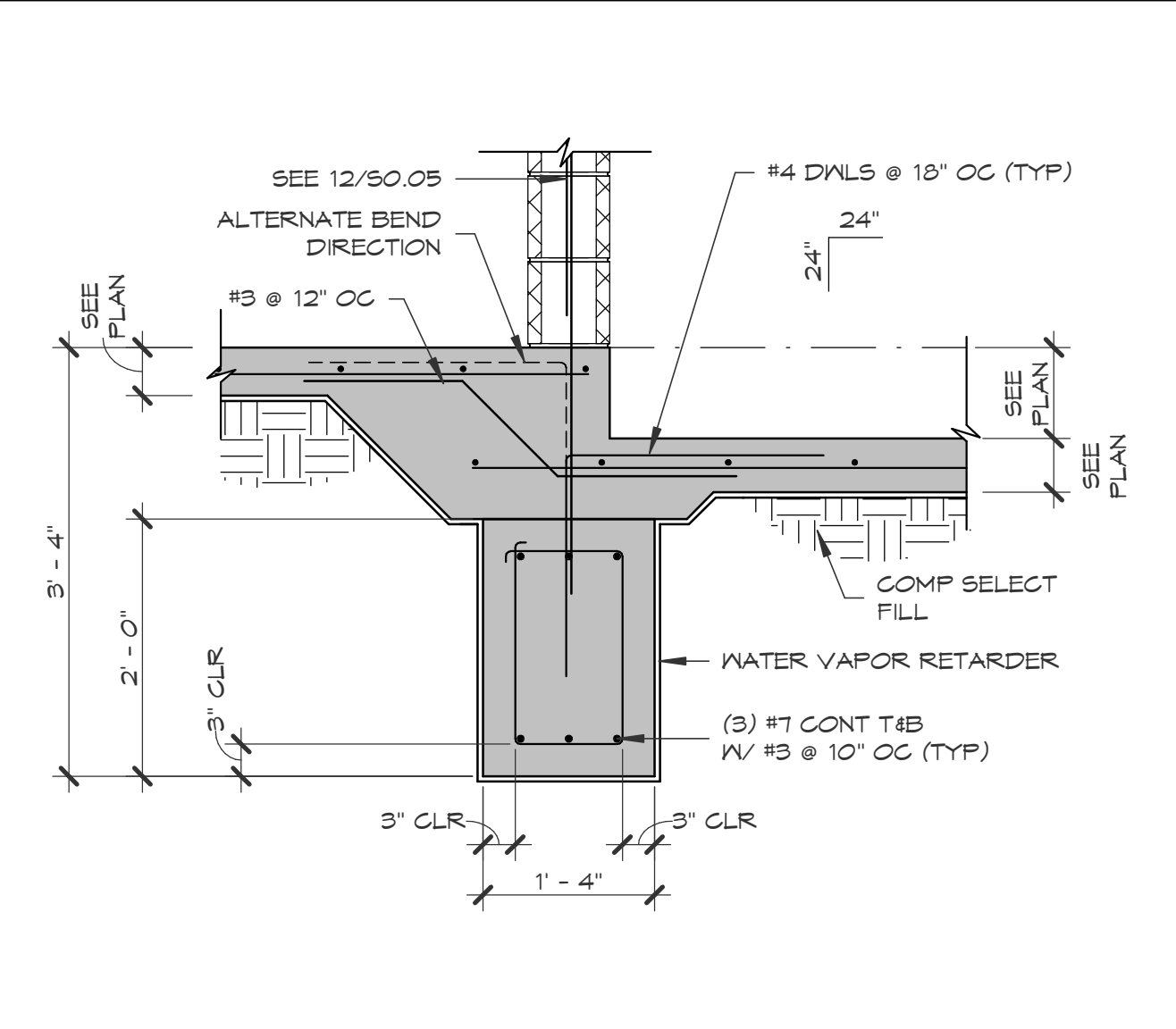
3 BUMP OUT DETAIL
SCALE: 3/4" = 1'-0"



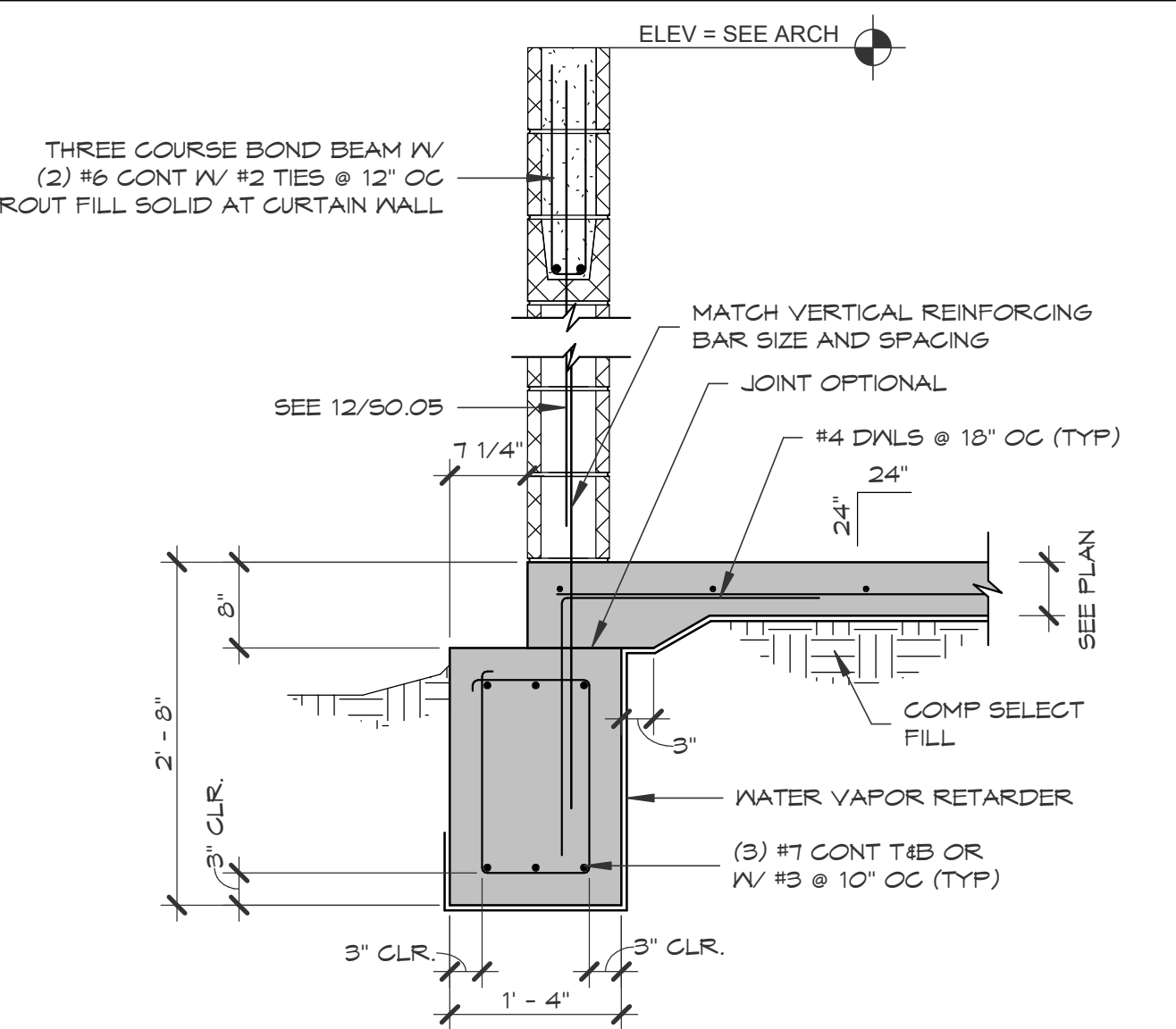
18 EXTERIOR GRADE BEAM AT BRICK LEDGE AT POST UP
SCALE: 3/4" = 1'-0"



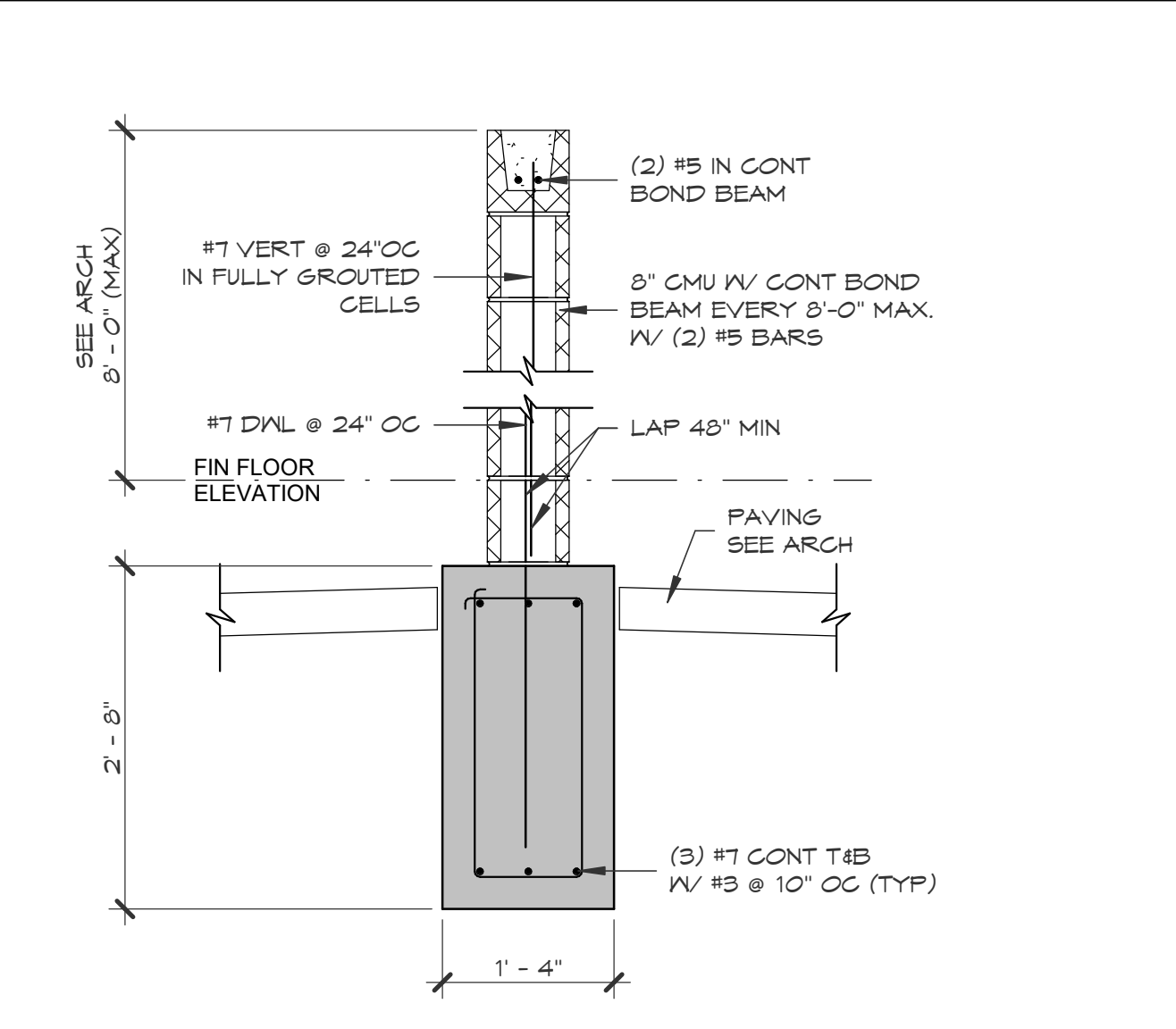
14 RAMP DETAIL
SCALE: 3/4" = 1'-0"



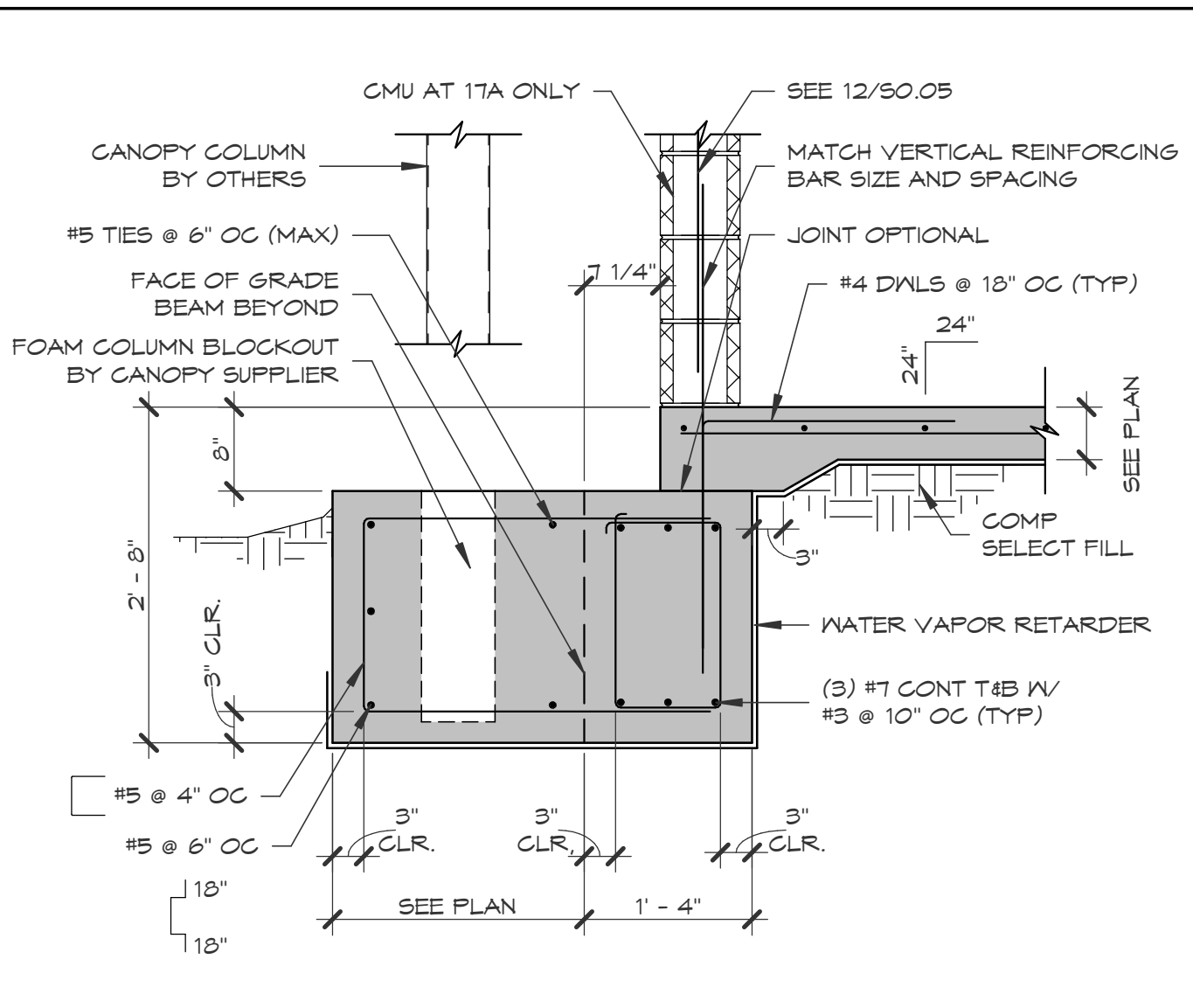
10 INTERIOR GRADE BEAM AT CMU WALL RECESS
SCALE: 3/4" = 1'-0"



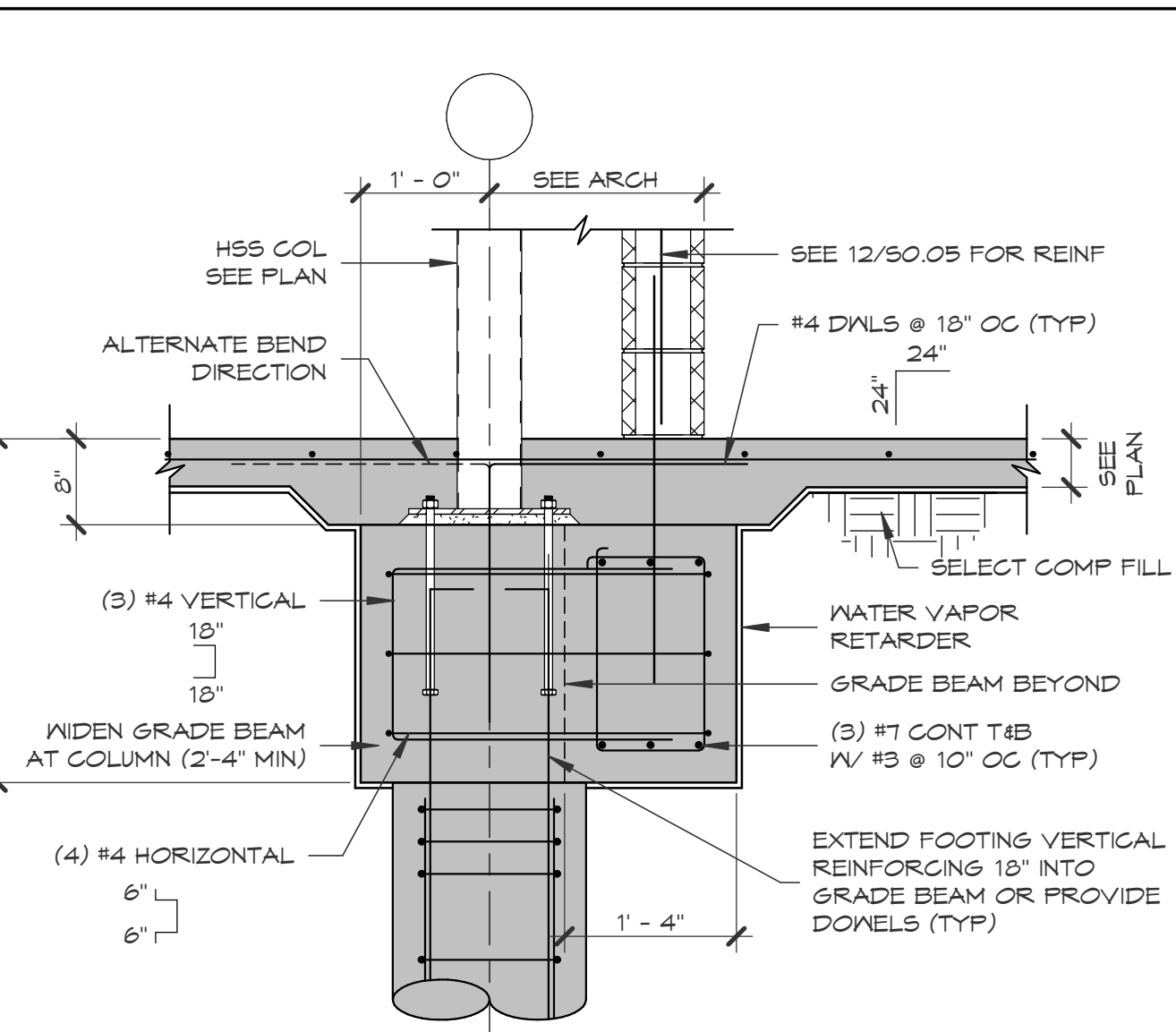
6 EXTERIOR GRADE BEAM AT WINDOW SILL
SCALE: 3/4" = 1'-0"



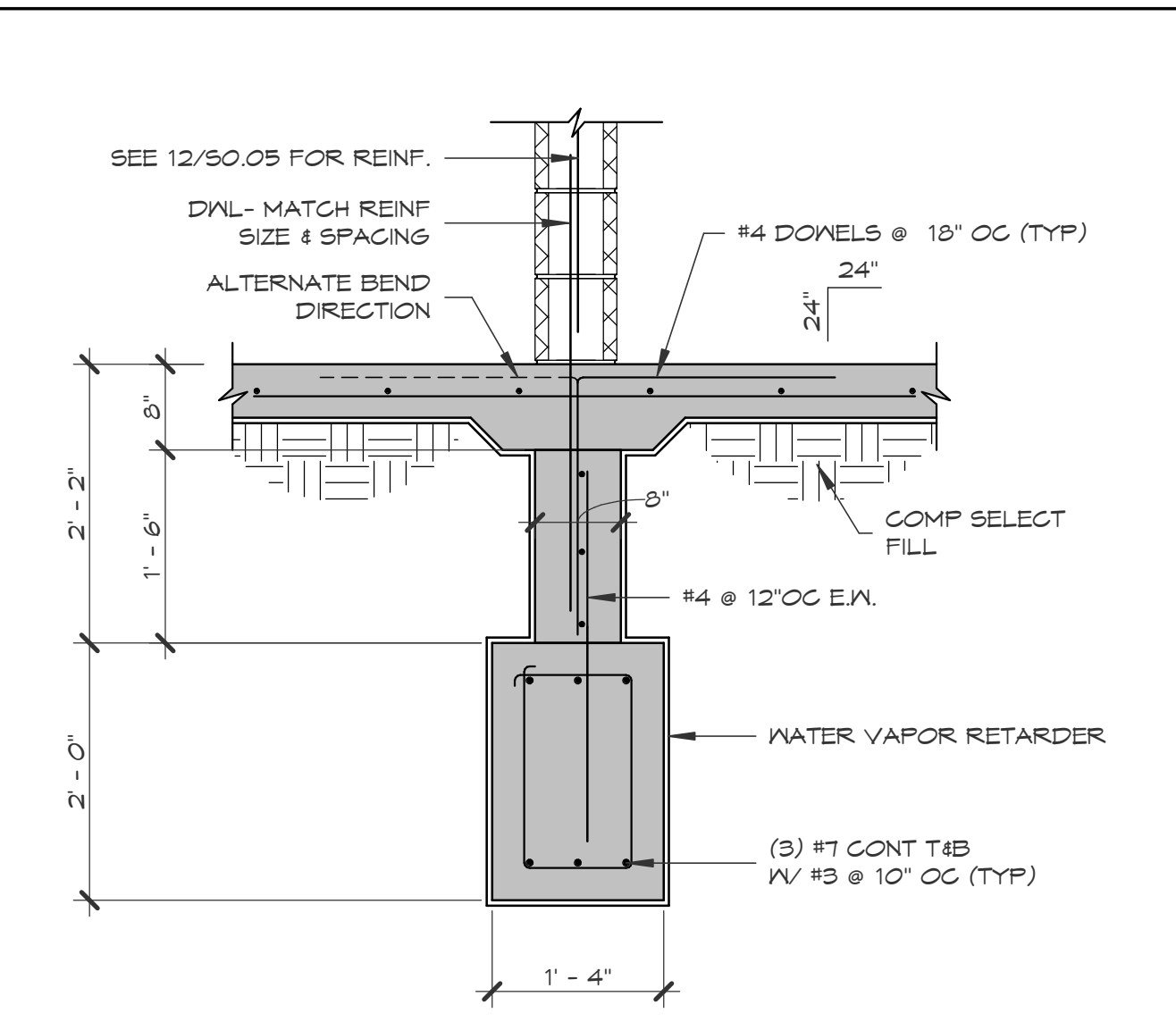
2 SCREEN WALL DETAIL
SCALE: 3/4" = 1'-0"



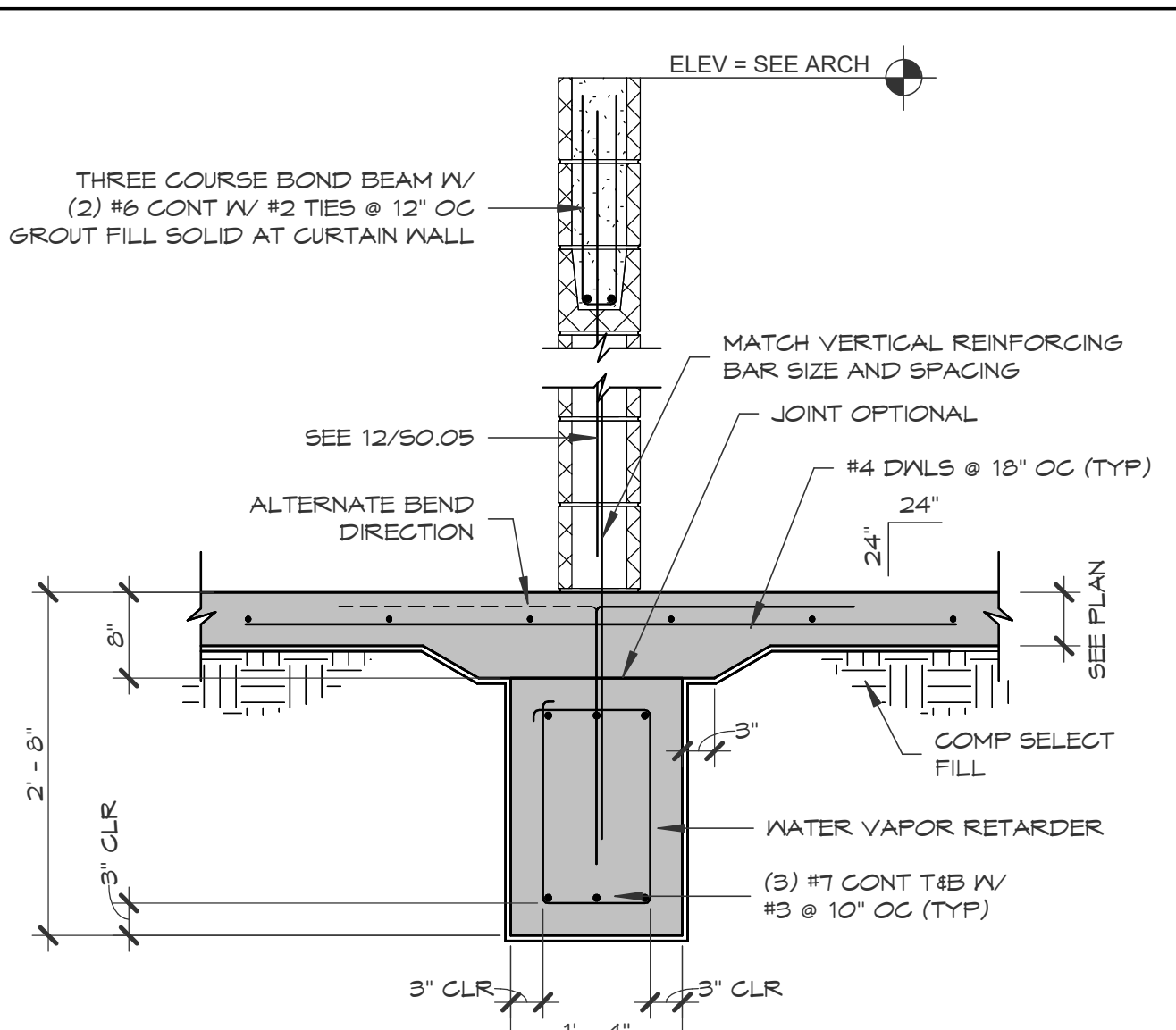
17 BUMP OUT DETAIL AT CANOPY COLUMN
SCALE: 3/4" = 1'-0"



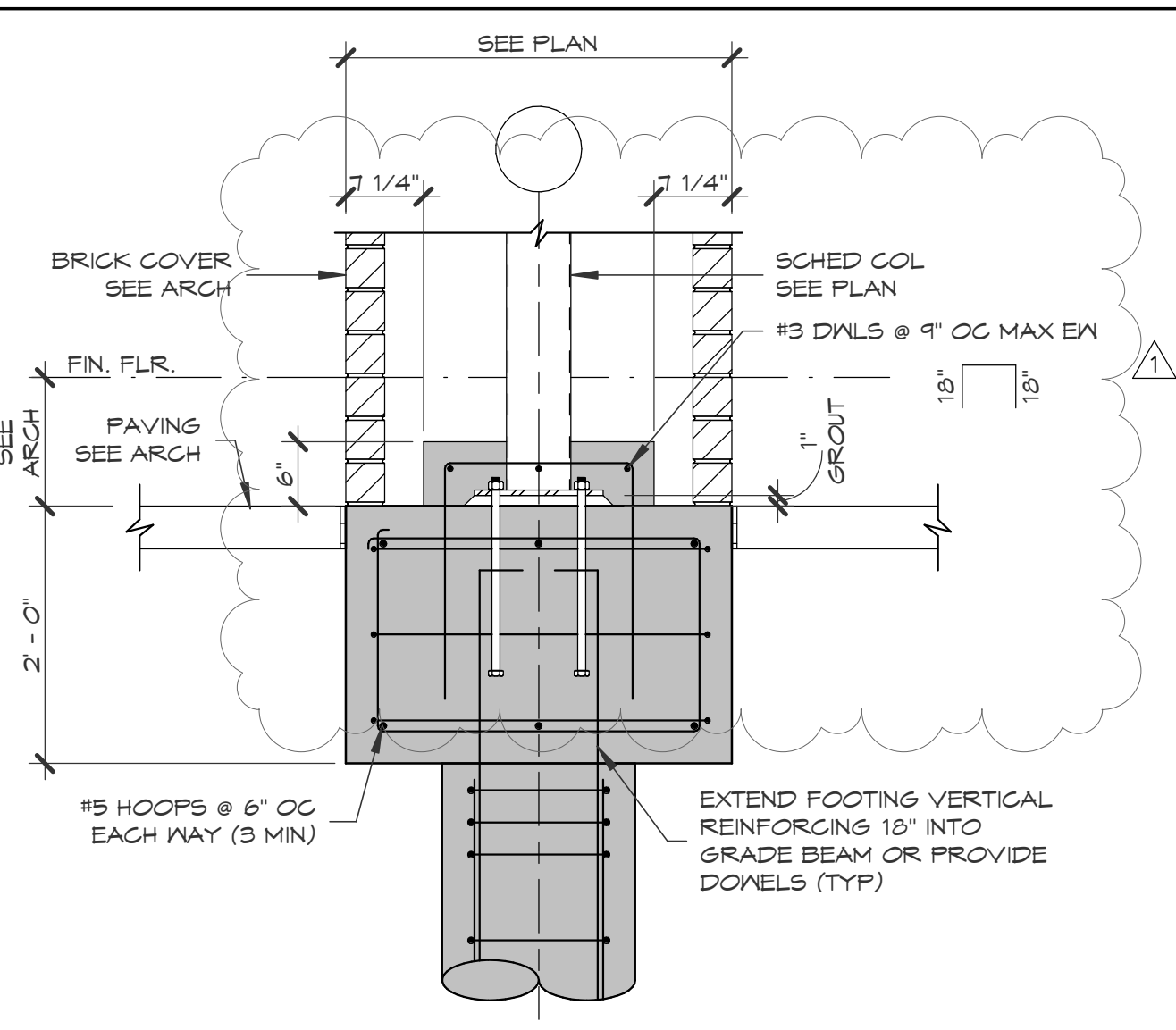
13 DETAIL
SCALE: 3/4" = 1'-0"



9 STEP DOWN SLAB DETAIL
SCALE: 3/4" = 1'-0"

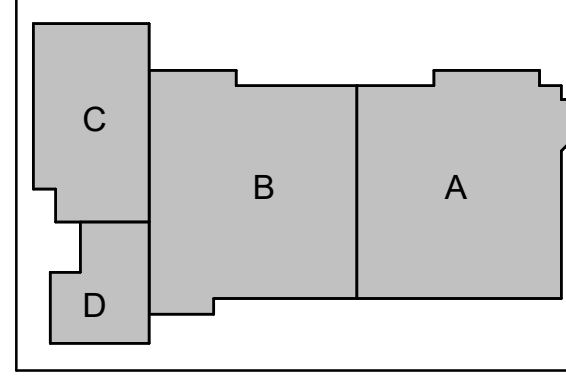


5 INTERIOR GRADE BEAM AT WINDOW SILL
SCALE: 3/4" = 1'-0"



1 ISOLATED EXTERIOR COLUMN DETAIL
SCALE: 3/4" = 1'-0"

CONSULTANTS
STRUCTURAL
 CJG Engineers
 Texas Engineering Firm No. F-170
 6051 North Course Drive, Suite 375
 Houston, TX 77072
 Tel: 713.780.3345
FOODSERVICE
 Foodservice Design Professionals
 594 Sawdust Road, Suite 139
 Spring, TX 77380-1960
 Tel: 281.350.2323
 Fax: 281.350.5959
LANDSCAPE
 FEA Group
 16060 Dillard Drive, Suite 250
 Houston, TX 77040
 Tel: 844.813.2949
MEP
 CMITA, INC
 2201 Timberloch Place, Suite 110
 The Woodlands, TX 77380
 Tel: 281.419.9899
CIVIL
 S&G Engineering Consultants, LLC
 1796 Avenue D, Suite B
 Katy, Texas 77493
 Tel: 832.437.7377



**REPLACEMENT
 ELEMENTARY SCHOOL
 ON MUSTANG ROAD**
 ALVIN INDEPENDENT SCHOOL DISTRICT
 5000 Mustang Rd, Alvin, TX 77511

ARCADIS
 ARCADIS INC.
 1330 POST OAK BOULEVARD, SUITE 2250
 HOUSTON, TX 77056
 tel 281.286.6605



Texas Engineering Firm No. F-170
 PROJECT #: 202502
 DATE: 2026-04-06
 DRAWN: JG
 CHECKED: HK
 DATE: 2026-04-06
 ISSUE: 1
 DATE: 2026-04-23
 PROPOSAL SET
 Addendum No. 05

S4.02
 FOUNDATION
 DETAILS